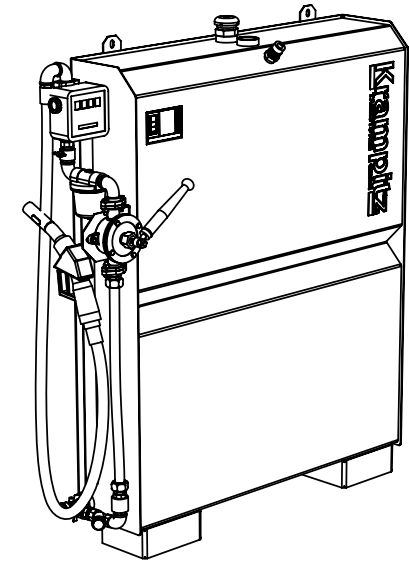
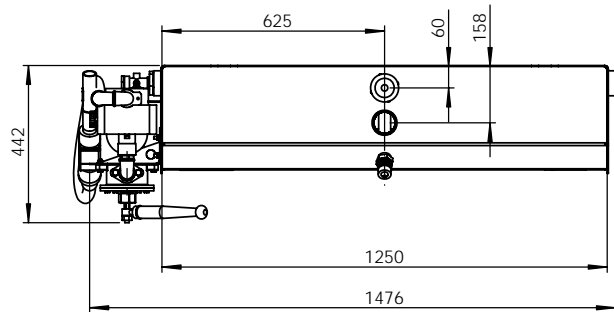
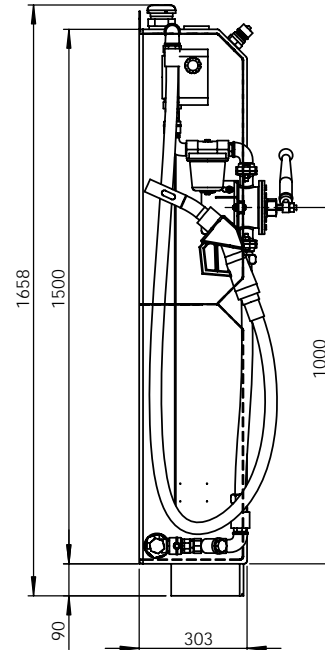
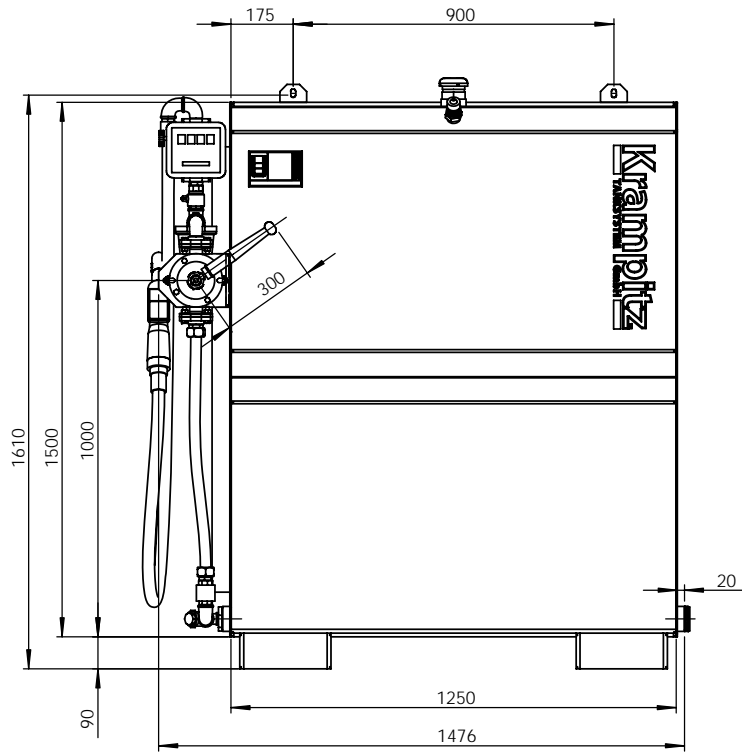



Füllhöhe = 95% der Tankinnenhöhe!
 Body stand = 95% middle high of tank!

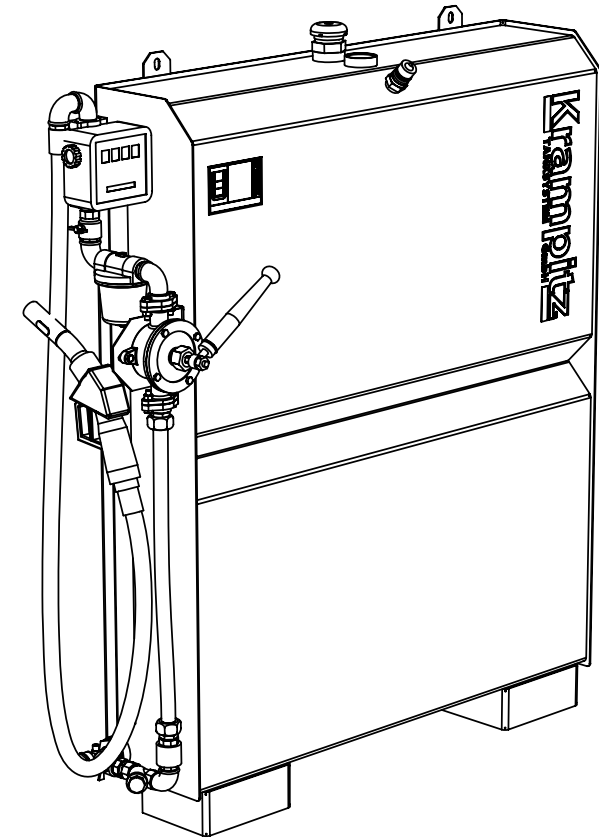
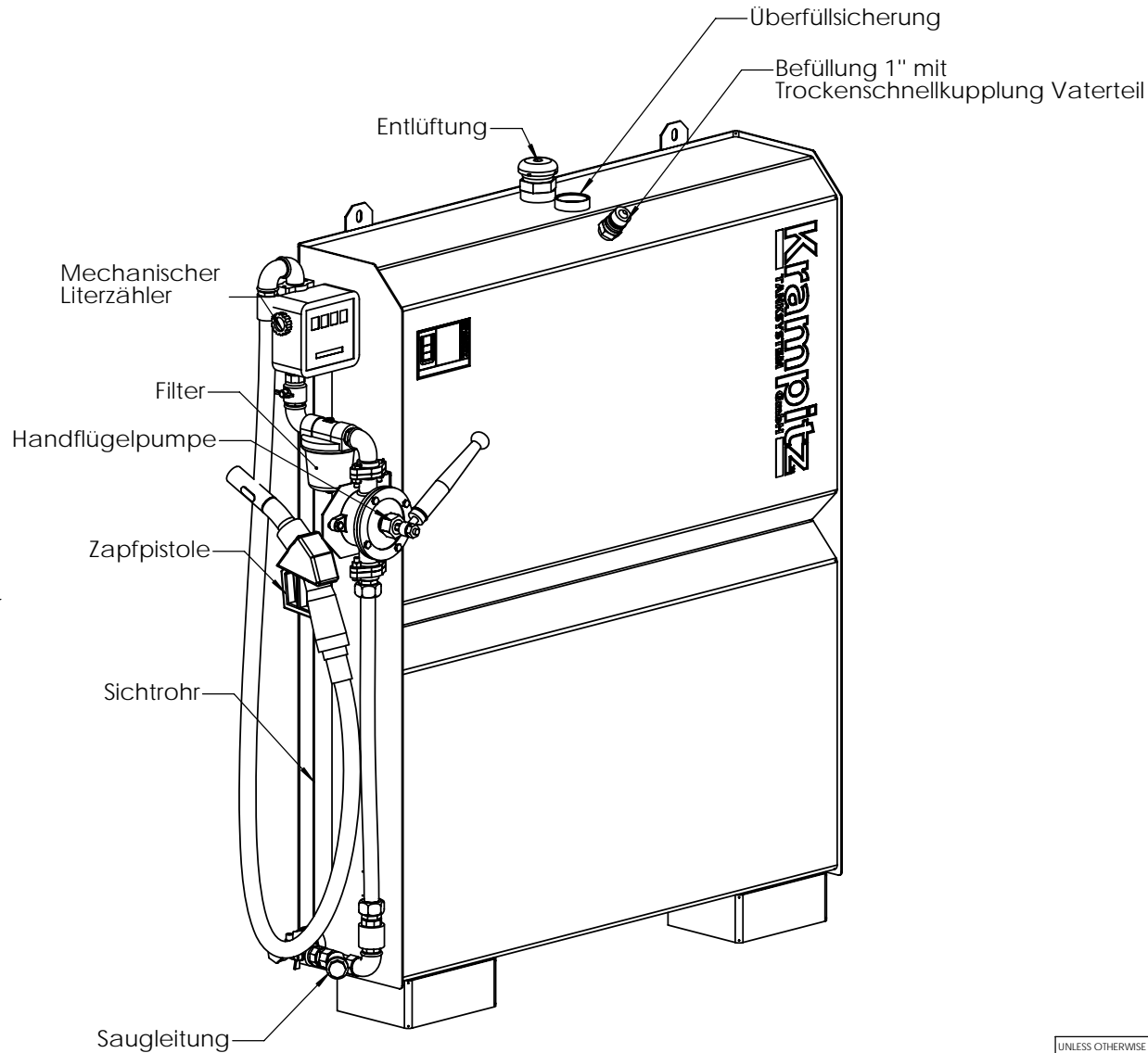


Bauform: GTE-XS Garagentank Einwandiger
 Volumen: 500 Ltr.
 Medium: Pflanzenöl

Technische Änderungen bleiben vorbehalten!
 Change reserve!

UNLESS OTHERWISE SPECIFIED: DIMENSIONS ARE IN MILLIMETERS SURFACE FINISH:		FINISH:		DEBUR AND BREAK SHARP EDGES		SCALE: 1:15	WEIGHT:
TOLERANCES:						MATERIAL: S235 JRG2 EN 100 25	
DRAWN	NAME	SIGNATURE	DATE	TIME	TITLE: 2D-Ansichten		
CHK'D	Krisko		Montag, 3. Juli 2006	09:34:27	GTE-XS-500 - Garagentank Einsatz mit Handflügelpumpe		
APPV'D					DWG NO.		
MFG					A3		
Q.A					REVISION		
					SHEET 1 OF 5		

Füllhöhe = 95% der Tankinnenhöhe !
 Body stand = 95 % middle high of tank !



Bauform: GTE-XS Garagentank Einwandiger
 Volumen: 500 Ltr.
 Medium: Pflanzenöl

Technische Änderungen bleiben vorbehalten !
 Change reserve !

UNLESS OTHERWISE SPECIFIED: DIMENSIONS ARE IN MILLIMETERS SURFACE FINISH:		FINISH:	DEBUR AND BREAK SHARP EDGES		SCALE: 1:10	WEIGHT:
TOLERANCES:					MATERIAL: S235 JRG2 EN 100 25	
NAME	SIGNATURE	DATE	TIME	TITLE: 3D Ansichten		
DRAWN	Krisko	Montag, 3. Juli 2006 09:34:27		GTE-XS-500 - Garagentank Einsatz mit Handflügelpumpe		
CHK'D				DWG NO.		
APPV'D				A3		
MFG				REVISION		
O.A				SHEET 2 OF 5		

